



# WiFi Logger Stick

## LSW-5

This CSI Solar WiFi connection point relays inverter data to the CSI Cloud & CSI Cloud Pro Platforms, providing remote visibility of solar plant performance and servicing needs.

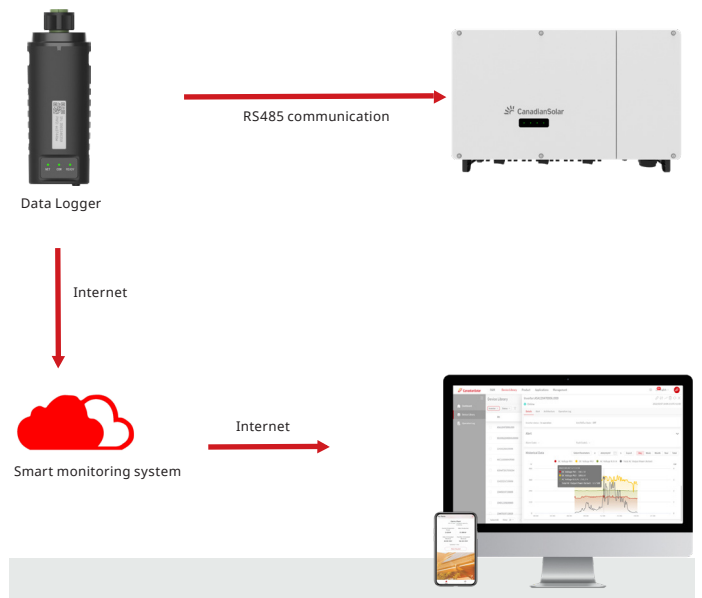
This unit collects CSI Solar inverter data via RS485, and relays it to the cloud via WiFi. With an IP65 rating, wide temperature range, and solid state electronics, this unit is built to survive outdoor solar power plant conditions.



product warranty

### KEY FEATURES

- External light indicator, logging status at a glance.
- Quick installation & easy commissioning. No extra power supply is required.
- Robust IP65 outdoor WiFi connection point, built to survive solar plant conditions.
- Detachable housing design design, easy to replace.



**CSI Solar Co., Ltd.** is committed to providing high quality solar products, solar system solutions and services to customers around the world. Canadian Solar was recognized as the No. 1 module supplier for quality and performance/price ratio in the IHS Module Customer Insight Survey, and is a leading PV project developer and manufacturer of solar modules, with over 63 GW deployed around the world since 2001.

**MODEL NAME****LSW-5**

Max. number of inverters	1
Inverter communication	4 Pin
Remote communication	WiFi (802.11 b/g/n)
Communication rate	9600 bps
Frequency	2.412 GHz - 2.472 GHz
WiFi transmitting power	802.11b: +17 dBm +/-1.5 dBm (@11 Mbps)
	802.11g: +15 dBm +/-1.5 dBm (@54 Mbps)
	802.11n: +14 dBm +/-1.5 dBm (@HT20, MCS7)
External antenna	Internal PCB Antenna
Data collection intervals	5 minutes
Data interface	RS485
Firmware updates	Remote update
Data storage	8 MBYTE FLASH
<b>ELECTRICAL</b>	
Input voltage	DC5V ~ DC12V
Working power	1.5 W
<b>ENVIRONMENTAL</b>	
Operating temperature	-30 °C ~ +70 °C
Operating humidity	< 90% Relative humidity, no condensing
Storage temperature	-45 °C ~ +90 °C
Storage humidity	< 40%
Protection class	IP 65
<b>PHYSICAL</b>	
Dimensions (L*W*H)	127 x 27 x 46 (mm)
Weight	80 g
<b>OTHER</b>	
Certificates	CE, ANATEL

The specifications and key features contained in this datasheet may deviate slightly from our actual products due to the on-going innovation and product enhancement. CSI Solar Co., Ltd. reserves the right to make necessary adjustment to the information described herein at any time without notice.  
 Caution: For professional use only. The installation and handling of PV equipment requires professional skills and should only be performed by qualified professionals. Please read the safety and installation instructions before using the product.