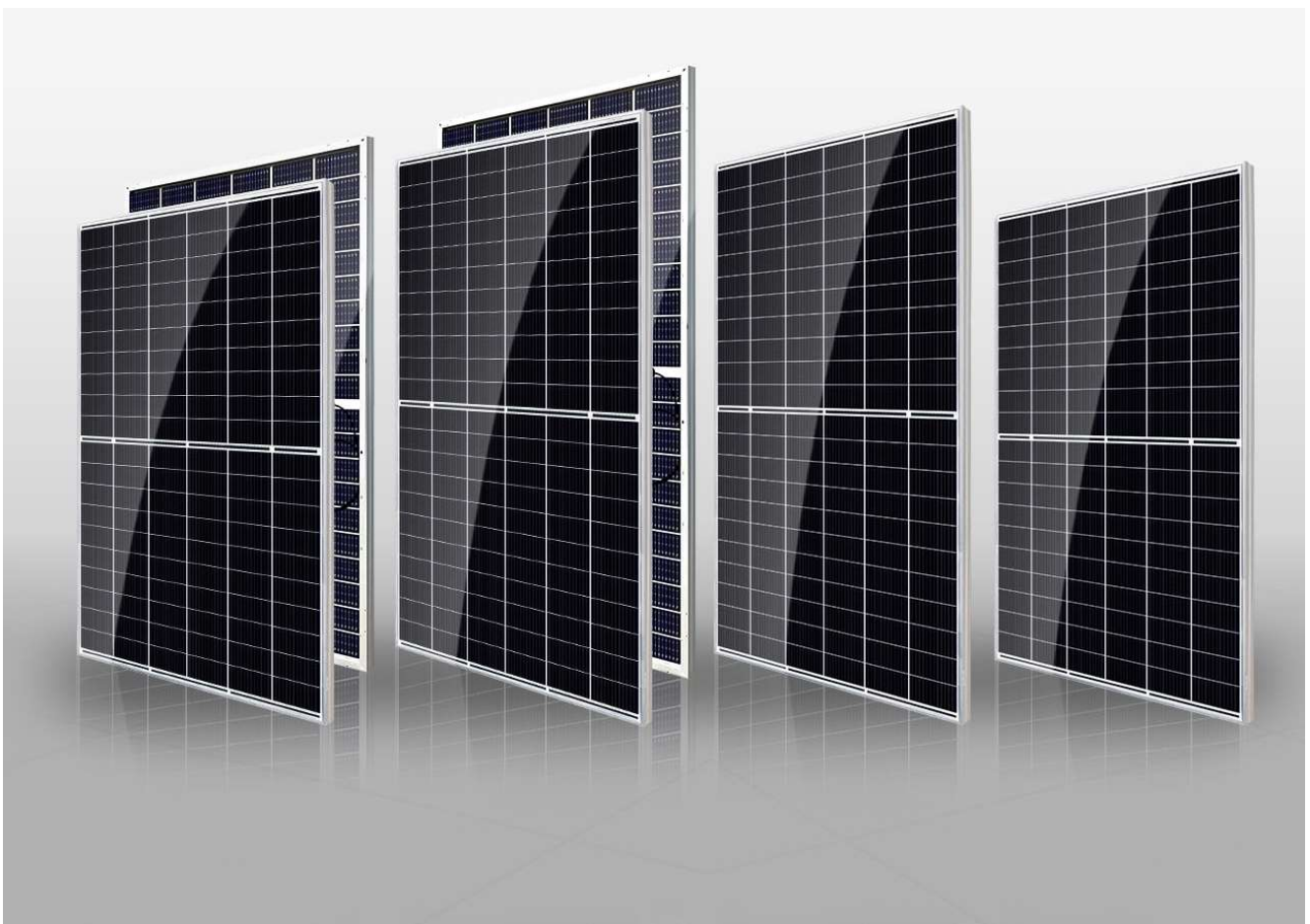


LEADING THE NEW ERA OF 600W+ MODULES

CANADIAN SOLAR
HiKu7 & BiHiKu7
UNPACKING INSTRUCTIONS

HiKu7 & BiHiKu7 – UP TO 670 W



**Step
00**

Special instructions before unpacking

CS7N & CS7L modules are packed vertically using an innovative packaging system. Please pay special attention :

- 1) For the roof projects: It is not allowed to carry the whole unpacked pallet onto the roof. Please unpack the pallet, take the module out one by one and then carry them to the roof horizontally by plan A or B shown as below, or other plans which ensure modules safety .



Plan A



Plan B



- 2) For all kinds of projects: It is recommended to strictly abide by the unpacking steps as follows.

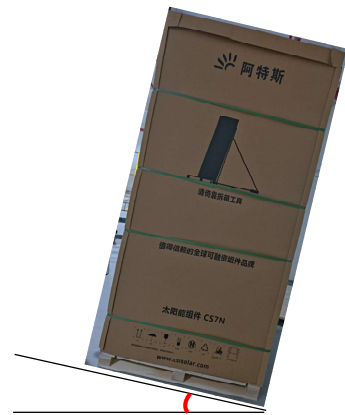
**Step
01**

Place pallets on flat ground

CS7N & CS7L modules are packed vertically using an innovative packaging system. Please place pallets on flat ground. The inclination of the ground should not exceed 4°



Flat ground

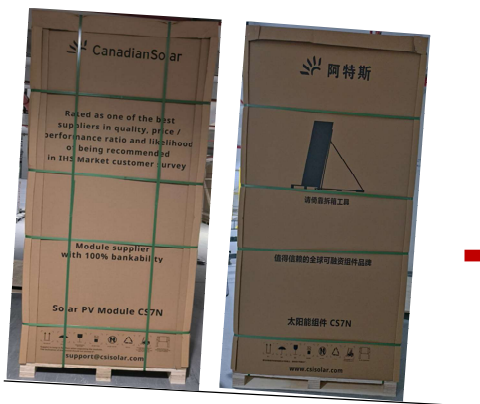


Inclination > 4°



Must be used unpacking rack when you unpack.

Please place the pallets in the right direction (shown as below) and use an unpacking rack to ensure the safety of the modules. Please check the details in appendix 01.



Place the pallet in right direction
(Ensure the bottom edge of the module is parallel to the tilt angle of the slope)



Unpacking rack

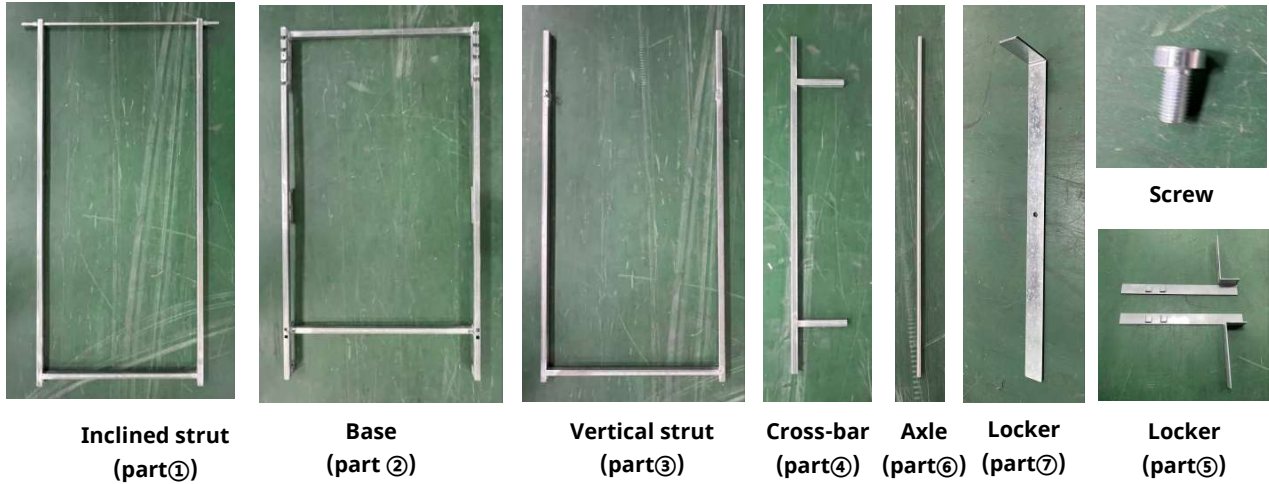


Unpacking rack onsite picture

Appendix
Step
01

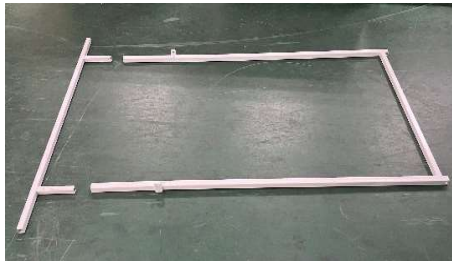
Unpacking rack making process

Unpacking rack support parts:



Assembly process:

Step1: put part ④ into part ③



Step2: put the part ⑥ cross part ③ and part ② and Secure the screw



Step4: After assembling and inserting the it under the wooden pallet, hook the locker ⑤ one end into the foot of the bracket and the other end into the wooden pallet foot.



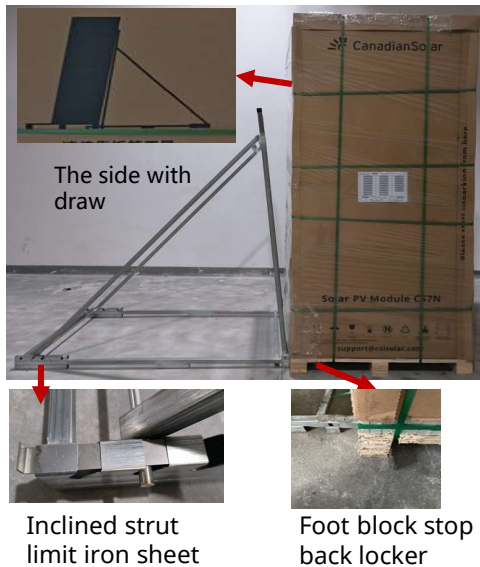
Step3: put the part ① one side into the part ② then put the other side of part ① cross with the part ③ and Secure the screw



Step 02

Place the unpacking rack

The unpacking rack is inserted under the wooden pallet from the side of the pallet with the instruction logo printed on, and **the upper check and back lock is installed:**



Attention:

- Please wear gloves to prevent injuries.
- Note the insertion direction of the unpacking rack: the schematic diagram of the unpacking rack is printed.
- Notice When the unpacking rack foot is inserted under the wooden pallet, add the backstop locker to the rack.
- Note that the limiting iron sheet is inserted into the inclined strut
- The angle of the unpacking rack is adjusted according to the angle of the ground to ensure that it is within 8° .
- No unpacking operation shall be carried out when the wind speed is above Force 6.

Step 03

Tear off the box shrink-wrap film

Tear off all the shrink-wrap film covering the box



Attention:

- Please wear gloves to prevent injuries.
- Please remove the shrink-wrap film with care and avoid pulling with excessive force.
- Unpacking operation shall not be carried out over wind force 6 (Strong Breeze, 10.8-13.8 m/s).

**Step
04**

Remove outer packaging straps

Cut off the packing straps outside the packing box



Attention:

- Please wear gloves to prevent injuries.
- then remove the cable ties, avoid bouncing the cable ties on your body.

**Step
05**

Remove the outside paper beams and box top cover

Remove the outside paper beams and the box top cover



Remove the outside paper beams

Remove the box top cover

Attention:

- Please wear gloves to prevent injuries.
- It is recommended to remove the top cover with the help of one of the wooden brackets.

**Step
06**

Remove the carton and rest it on the unpacking rack

Remove the carton and rest it on the unpacking rack



Attention:

- Please wear gloves to prevent injuries.
- Please Start with "Unpack here"
- One side of the carton is cushioned against the support; The other three sides are suggested to be torn off (when the wind is strong).

**Step
07**

Remove the inner packing straps

Remove the inner packing straps and push modules against the unpacking rack



Attention:

- Please wear gloves to prevent injuries.
- Please keep vertical packing straps when push modules
- People should stand on both sides and cut the vertical packing straps while pushing

Remove the landscape inner packing straps Push the module against the unpacking rack while cut the vertical packing straps

**Step
08****Take out the modules: one by one**

Two workers are required to take modules out of the box. When handling modules always use both hands. Tack out the modules one by one until the last one.

**Attention:**

- Please wear gloves to prevent injuries.
- It is recommended that two workers take out the modules from both sides of the packaging at the same time.
- Need people to support the unpacking modules during the whole process.
- Please install the modules right after unpacking. and install the modules in one time once opening the package. Do not leave a few pieces in the packing box for a long time.
- Sort out the empty packaging, separating the different materials for proper recycling.

**Step
08**

Take out the modules: one by one

If the whole package cannot be completed installation till end of the day, the remaining modules can be temporarily placed in the following ways:

Two wooden pallets can be jointed as below, and carton can be padded above. Place the modules horizontally on the pallets. Please make sure the bottom module's front side is looking upwards, and the rest of the modules' back side downward. The number of stacked modules should be less than 12.

You can also order special pallet for 210 products for better transportation experience. For rooftop projects, if you need pallet to transport the modules to the roof, you need order special pallet for 210 products .



Jointed by two pallets

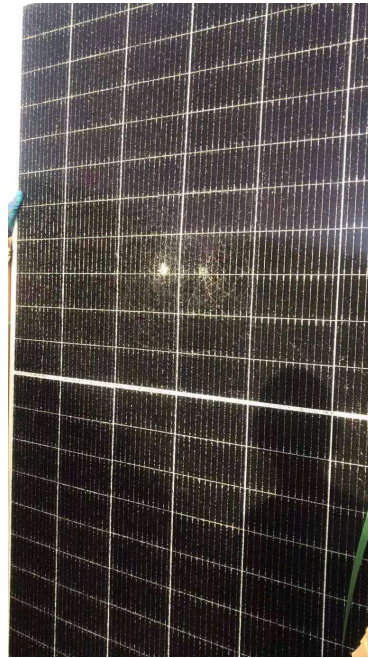


Bottom module placed on the pallets

- Please take photos and contact the local sales/customer service staff at first time if you encounter with damaged package or modules, and feedback to the service mailbox, support@csisolar.com, thanks!
- If the customer does not unpack the module according to the steps specified in this manual, we shall not assume any responsibility for the personal and property damage.



Damaged package



Damaged module

LEARN MORE



Scan to see how HiKu7 and BiHiKu7 modules are made and tested on YouTube



Facebook



Instagram



LinkedIn



Twitter

Leading The New Era of 600W+ Modules Canadian Solar HiKu7 & BiHiKu7 Unpacking Instruction

CSI Solar Co., Ltd.

www.csisolar.com marketing@csisolar.com