

INOSYS LBS – 250A/1500Vdc
 87P02026 (250A) without tripping

INOSYS LBS are load break switches which are available in manual version. They can be operated using the handle (manual & trip version) to disconnect part or the complete electrical installation. They make and break under all load conditions, provide safety isolation for any low voltage circuits up to 1500VDC and are suitable for emergency switching.



High-performance switching in a compact frame

INOSYS LBS switches integrate a patented technology that offers high switching capacity of 500 and 750 VDC per pole with optimum arc containment and significant power loss reduction - all within a compact device.

Safe & reliable operation

- Reliable position indication through visible contacts.
- The opening and closing of the switch is fully independent from the speed of operation, ensuring safe operation under all conditions.
- High temperature withstand: no derating up to 55 °C (131° F).

Easy to install

- Wiring: as the switch is non-polarised all types of wiring and connections are possible.
- Easy access without tools to integrate auxiliary contacts and tripping coil (both located within the switch footprint).

Characteristics UL

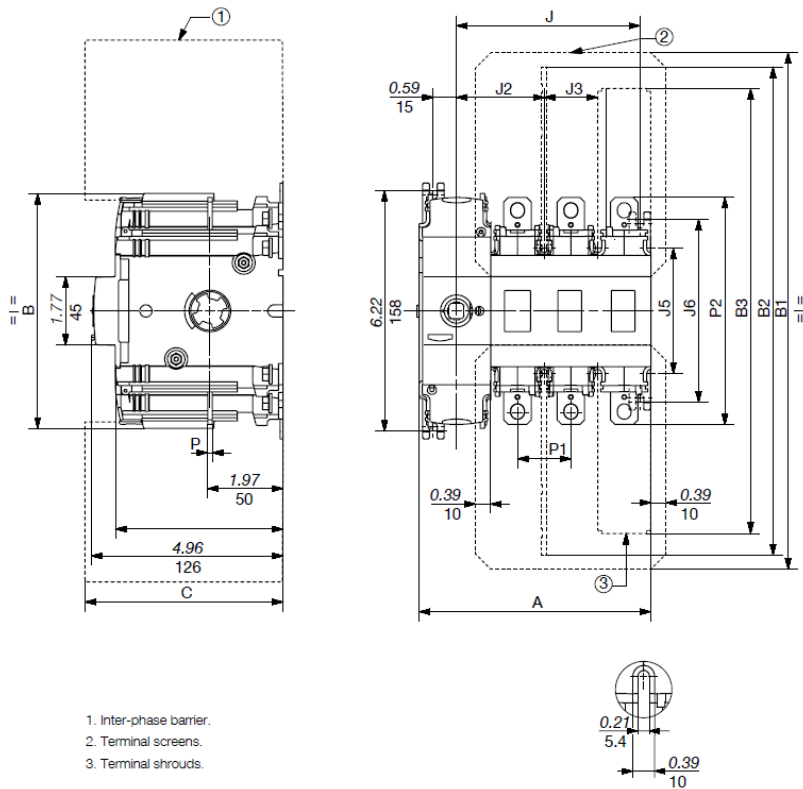
Rating		250 A			
Number of circuits	Rated voltage	(A)	Number of pole(s) in series per polarity	Number of pole(s) of the device	Frame size
1 circuit	1500 VDC	250	2P	2P	F2
Short-circuit capacity at 1000 & 1500 VDC (any circuit breaker)					
Prospective short-circuit current (kA rms DC)		10(1)			
Mechanical characteristics					
Durability (number of operating cycles)		8 000			
Electrical characteristics					
Durability (number of operating cycles)		400			

(1): Without fuse during 50ms.

Characteristics IEC

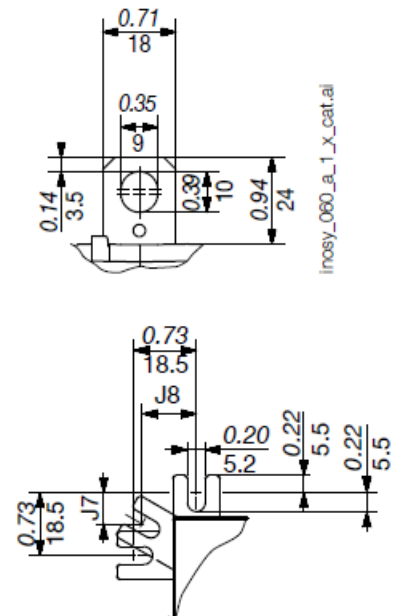
Rated current I_n		250 A
Frame size		F2
Thermal current at 40°C (A)		250
Thermal current at 50°C (A)		250
Thermal current at 60°C (A)		250
Rated insulation voltage U_i (V)		1500
Rated impulse withstand voltage U_{imp} (kV)		12
Number of circuits	Rated voltage	Utilisation category
1 circuit	1500 VDC	DC – 21B
Short circuit capacity at 1000 & 1500 VDC (without protection)		I_e (A)
Rated short-time withstands current I_{cw} 1s (kA eff.)		5
Rated short-circuit making capacity I_{cm} (kA peak) – 60 ms		10
Connection		
Recommended Cu rigid cable cross-section (mm ²)		120
Recommended Cu busbar width (mm)		20
Mechanical characteristics		
Durability (number of operating cycles)		8 000
Electrical characteristics		
Durability (number of operating cycles)		400

Product dimensions:



Terminal dimensions :

Connection terminal F2



Rating (A)	Frame size	Units	A		A1	J			J1		J							
			2 P	3 P	1+1 P	1+1 P	1+1 P	2 P	3 P									
160 ... 315	F2	in	4.60	5.98	4.60	1.97	2.05	3.35	4.72									
		mm	117	152	117	50.5	52.5	85.5	120.5									
Rating (A)	Frame size	Units	B2		B3	C	J2	J3	J4	J5	J6	J7	J8	P	P1	P2		
			B	B1													short	long
160 ... 315	F2	in	5.90	13.35	7.85	12.61	11.64	4.33	2.26	1.38	2.34	3.23	4.72	0.39	0.58	0.12	1.38	5.87
		mm	154	339	199	320	296	110	57.5	35	59.5	82	120	10	15	3	35	149

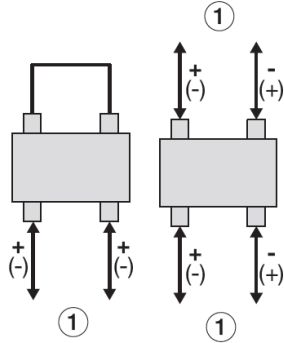
F2 - F3

All mounting orientations are possible. Derating may apply - please consult us.



Pole connection in series:

Grounded network Floating network



Accessories:

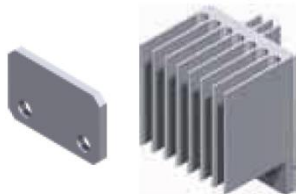
External operation handle:



For LBS without tripping function

Frame size	Handle type	Handle colour	Degree of protection	Front operation	Lateral operation
				Reference	Reference
F2	S2	Black	3R,12	742F 2111	
F2	S2	Black	4,4X	742D 2111	142J 6111
F2	S2	Red	4,4X	742E 2111	

Bridging bar for poles in series:








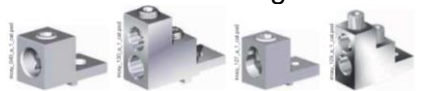
1500 VDC - 1 circuit

Frame size	Rating (A)	No. of poles	Quantity to be ordered	Reference
F2	250	3 P	2	8499 0025

Auxiliary contact:



Frame size	Connection type	Type	Reference
F2 - F3	Screw	NO/NC standard	8499 0001
F2 - F3	Screw	NO/NC low level	8499 0002
F2 - F3	Screw	NC > 600 V	8499 0003

Shaft: 	<table border="1"> <thead> <tr> <th>Frame size</th> <th>Handle type</th> <th>Length (mm)</th> <th>Reference</th> </tr> </thead> <tbody> <tr> <td>F2 - F3</td> <td>S2, S2L</td> <td>200</td> <td>1400 1020</td> </tr> <tr> <td>F2 - F3</td> <td>S2, S2L</td> <td>320</td> <td>1400 1032</td> </tr> <tr> <td>F2 - F3</td> <td>S2, S2L</td> <td>400</td> <td>1400 1040</td> </tr> </tbody> </table> <p><i>Other lengths: please consult us.</i></p>	Frame size	Handle type	Length (mm)	Reference	F2 - F3	S2, S2L	200	1400 1020	F2 - F3	S2, S2L	320	1400 1032	F2 - F3	S2, S2L	400	1400 1040
Frame size	Handle type	Length (mm)	Reference														
F2 - F3	S2, S2L	200	1400 1020														
F2 - F3	S2, S2L	320	1400 1032														
F2 - F3	S2, S2L	400	1400 1040														
Terminal screen: 	<table border="1"> <thead> <tr> <th>Frame size</th> <th>No. of poles</th> <th>Position</th> <th>Reference⁽¹⁾</th> </tr> </thead> <tbody> <tr> <td>F2</td> <td>3 P</td> <td>Top and bottom</td> <td>8499 3232</td> </tr> </tbody> </table>	Frame size	No. of poles	Position	Reference ⁽¹⁾	F2	3 P	Top and bottom	8499 3232								
Frame size	No. of poles	Position	Reference ⁽¹⁾														
F2	3 P	Top and bottom	8499 3232														
Captive nut: 	<table border="1"> <thead> <tr> <th>Frame size</th> <th>Pack (unit)</th> <th>Reference</th> </tr> </thead> <tbody> <tr> <td>F2</td> <td>12</td> <td>8499 6120</td> </tr> <tr> <td>F2</td> <td>120</td> <td>8499 6121</td> </tr> </tbody> </table>	Frame size	Pack (unit)	Reference	F2	12	8499 6120	F2	120	8499 6121							
Frame size	Pack (unit)	Reference															
F2	12	8499 6120															
F2	120	8499 6121															
Voltage tap: 	<table border="1"> <thead> <tr> <th>Frame size</th> <th>Pack (unit)</th> <th>Reference</th> </tr> </thead> <tbody> <tr> <td>F2</td> <td>12</td> <td>8499 9012</td> </tr> </tbody> </table>	Frame size	Pack (unit)	Reference	F2	12	8499 9012										
Frame size	Pack (unit)	Reference															
F2	12	8499 9012															
Holding insert: 	<table border="1"> <thead> <tr> <th>Frame size</th> <th>Pack (unit)</th> <th>Reference</th> </tr> </thead> <tbody> <tr> <td>F2 - F3</td> <td>10</td> <td>8499 6220</td> </tr> <tr> <td>F2 - F3</td> <td>100</td> <td>8499 6221</td> </tr> </tbody> </table>	Frame size	Pack (unit)	Reference	F2 - F3	10	8499 6220	F2 - F3	100	8499 6221							
Frame size	Pack (unit)	Reference															
F2 - F3	10	8499 6220															
F2 - F3	100	8499 6221															
Terminal lug: 																	

Version	Frame size	Number and size (min. - max.) of cables	Type of cable	Openings per lug	Quantity per reference	Dimension "Y" (mm/in)	Type	Reference ⁽¹⁾
With and without tripping function	F2	2 conductors (#12 - 2/0)	Cu / Al	2	2	32,5 / 1.29	IHI 2S2-0-TP-STK-34-49-HEX	3954 2023 ⁽²⁾
	F2		Cu / Al		3			3954 3023 ⁽²⁾
	F2		Cu / Al		4			3954 4023 ⁽²⁾